

PART OF THE N.E. 1/4 OF SECTION 32, T.7N., R.1W., S.L.B. & M.

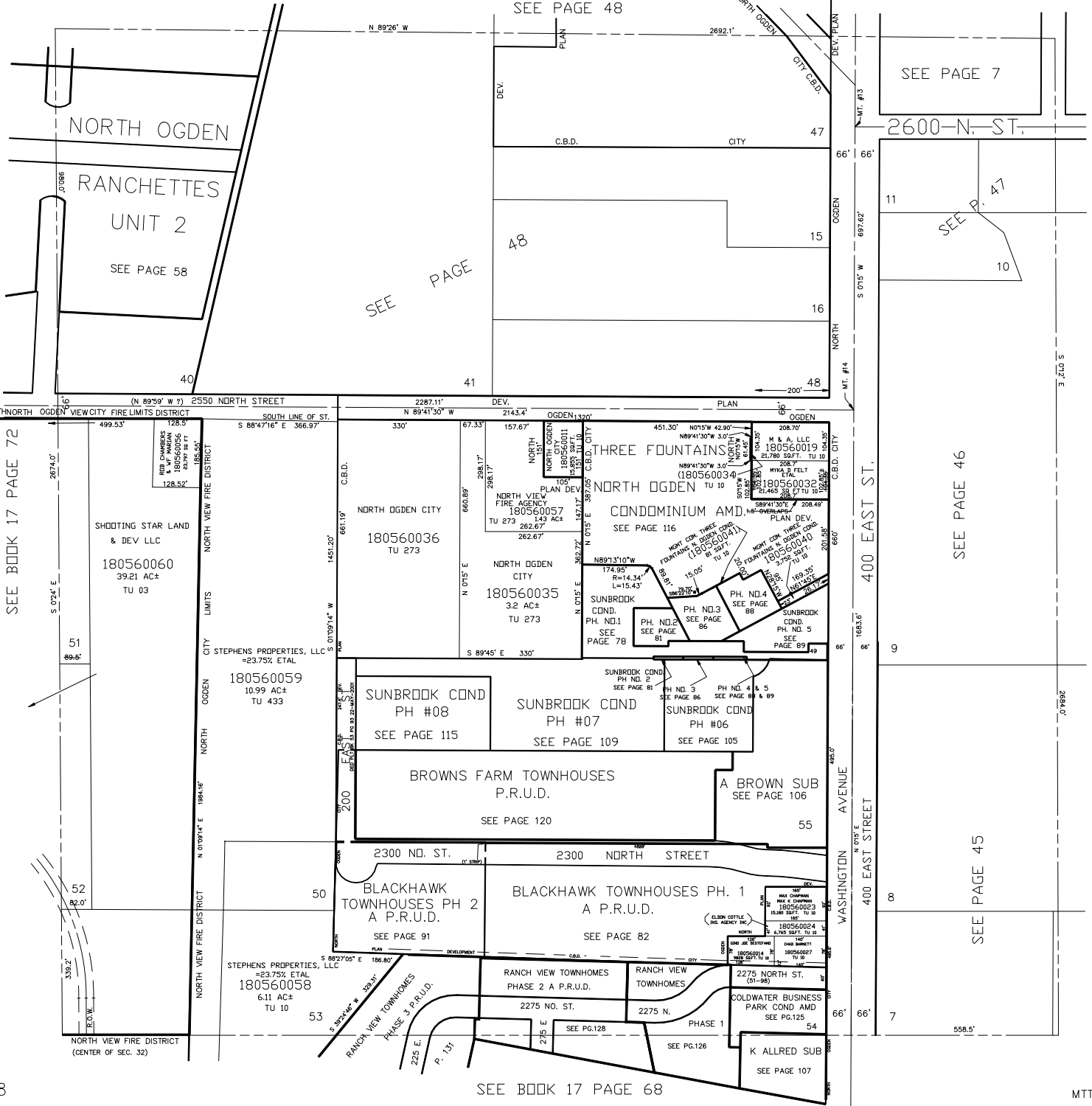
NORTH OGDEN

LOTS 49 TO 53 PLAT B
IN NORTH OGDEN CITY

SCALE 1" = 200'

TAXING UNIT: 03, 10, 273

SEE PAGE 48



SEE BOOK 17 PAGE 72

SEE PAGE

SEE PAGE 7

SEE P.

SEE PAGE 46

SEE PAGE 45

SEE BOOK 17 PAGE 68